

Anti-GOAT IgG (H&L) (Alkaline Phosphatase Conjugated) Secondary Antibody
Rabbit Polyclonal, Alkaline Phosphatase (Calf Intestine)
Catalog # ASR2030**Specification****Anti-GOAT IgG (H&L) (Alkaline Phosphatase Conjugated) Secondary Antibody - Product Information**

Description	Anti-GOAT IgG (H&L) (RABBIT) Antibody
Host	Alkaline Phosphatase Conjugated
Conjugate	Rabbit
Target Species	Alkaline Phosphatase (Calf Intestine)
Clonality	Goat
Application	Polyclonal
Application Note	WB, E, IC
	ELISA 1:2,000-1:13,000;Western Blot
	1:500-1:2,500;Immunochemistry
	1:200-1:1,000
Physical State	Liquid (sterile filtered)
Host Isotype	IgG
Target Isotype	IgG (H&L)
Buffer	0.05 M Tris Chloride, 0.15M Sodium Chloride, 0.001M Magnesium Chloride, 0.0001M Zinc Chloride, 50% (v/v) Glycerol; pH 8.0
Immunogen	Goat IgG whole molecule
Stabilizer	10 mg/mL Bovine Serum Albumin (BSA) - Immunoglobulin and Protease free
Preservative	0.1% (w/v) Sodium Azide

Anti-GOAT IgG (H&L) (Alkaline Phosphatase Conjugated) Secondary Antibody - Additional Information**Shipping Condition**

Wet Ice

Purity

Anti-Goat Secondary Antibody was prepared from monospecific antiserum by immunoaffinity chromatography using Goat IgG coupled to agarose beads followed by solid phase adsorption(s) to remove any unwanted reactivities. Assay by immunoelectrophoresis resulted in a single precipitin arc against anti-Alkaline Phosphatase (calf intestine), anti-Rabbit Serum, Goat IgG and Goat Serum.

Storage Condition

Store secondary antibody at 4° C before opening. DO NOT FREEZE. Anti-Goat secondary antibodies are stable at 4° C as an undiluted liquid. Dilute only prior to immediate use. Freezing alkaline phosphatase conjugates will result in a substantial loss of enzymatic activity.

Precautions Note

This product is for research use only and is not intended for therapeutic or diagnostic applications.

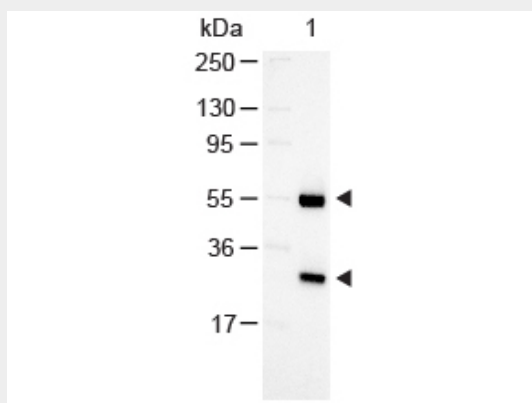
Anti-GOAT IgG (H&L) (Alkaline Phosphatase Conjugated) Secondary Antibody - Protein Information

Anti-GOAT IgG (H&L) (Alkaline Phosphatase Conjugated) Secondary Antibody - Protocols

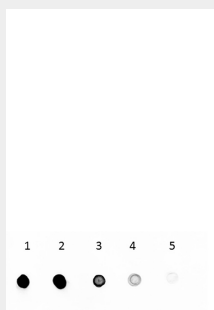
Provided below are standard protocols that you may find useful for product applications.

- [Western Blot](#)
- [Blocking Peptides](#)
- [Dot Blot](#)
- [Immunohistochemistry](#)
- [Immunofluorescence](#)
- [Immunoprecipitation](#)
- [Flow Cytometry](#)
- [Cell Culture](#)

Anti-GOAT IgG (H&L) (Alkaline Phosphatase Conjugated) Secondary Antibody - Images



Western Blot of Rabbit anti-Goat Antibody Alkaline Phosphatase Conjugated Lane 1: Goat IgG Load: 100 ng per lane Secondary antibody: Alkaline Phosphatase Conjugated Rabbit Anti-Goat Antibody at 1:1000 for 60 min at RT Block: MB-070 30 min RT Predicted/Observed size: 55 and 28 kDa, 55 and 28 kDa



Dot Blot of Goat IgG (H&L) Secondary Antibody Alkaline Phosphatase Conjugated Antigen: Goat IgG Load: Lane 1 - 200ng Lane 2 - 66.7ng Lane 3 - 22.2ng Lane 4 - 7.4ng Lane 5 - 2.5ng Primary antibody: none Secondary antibody: Goat IgG (H&L) Secondary Antibody Alkaline Phosphatase Conjugated at 1:1,000 for 60 min at RT. Detected using Alkaline Phosphatase Substrate. Block: MB-070 60 min at RT.

Anti-GOAT IgG (H&L) (Alkaline Phosphatase Conjugated) Secondary Antibody - Background

Secondary Antibodies are available in a variety of formats and conjugate types. When choosing a secondary antibody product, consideration must be given to species and immunoglobulin specificity, conjugate type, fragment and chain specificity, level of cross-reactivity, and host-species source and fragment composition.